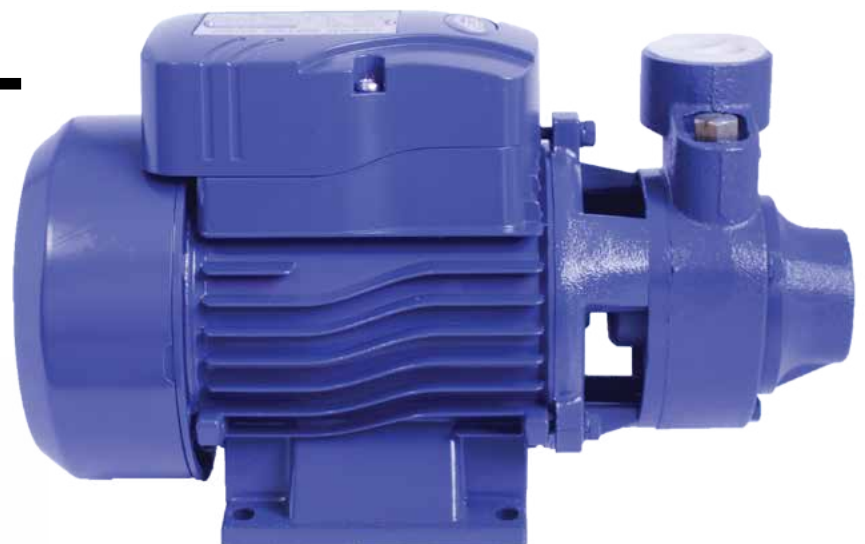




CENTRIFUGAL RANGE

QB PERIPHERAL VANE



PERIPHERAL VANE PUMP



QB

Range of performance

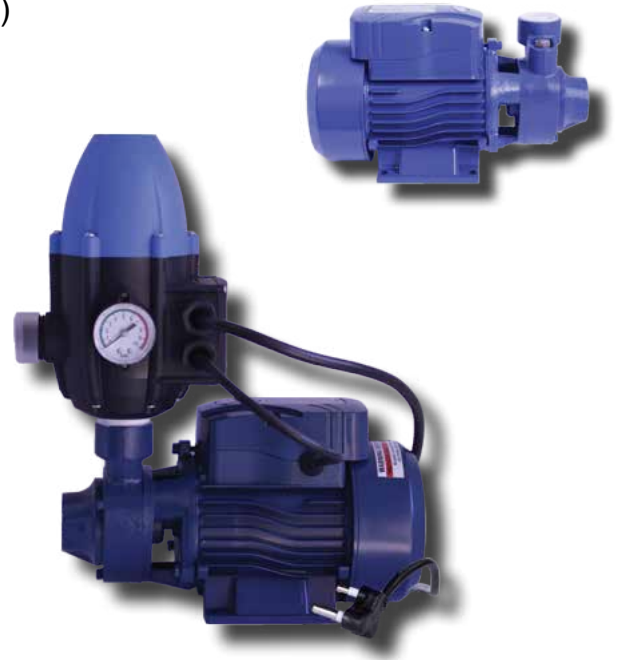
Flow rate: max 50 L/min (3m³/h)
 Head: max 60m

Limits of use

Liquid temperature: 40°C
 Ambient temperature: 40°C

Uses and installations

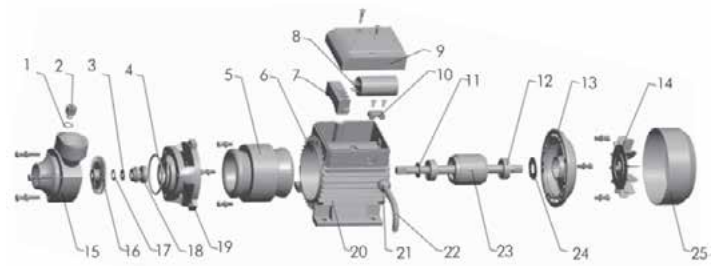
The QB range is recommended for pumping clean water without abrasive particles and liquids that are chemically non aggressive for the materials of which the pump is made. Due to their reliability, simplicity of use and economy, they are suitable for domestic use and in particular for high pressure applications. The pump must be installed under a vented cover and protected against exposure to rain or water spray.



Construction Characteristics

Pump Body: Cast Iron (Brass inserts front and back of volute - QB 60)
 Impeller: Brass, with radial peripheral vanes
 Motor Shaft: Stainless Steel 304
 Mechanical Seal: Ceramic-graphite
 Electric Motor: Single-phase 220V - 50Hz with capacitor and thermal overload protector.
 Insulation: Class B
 Protection: IP 44

Diagram

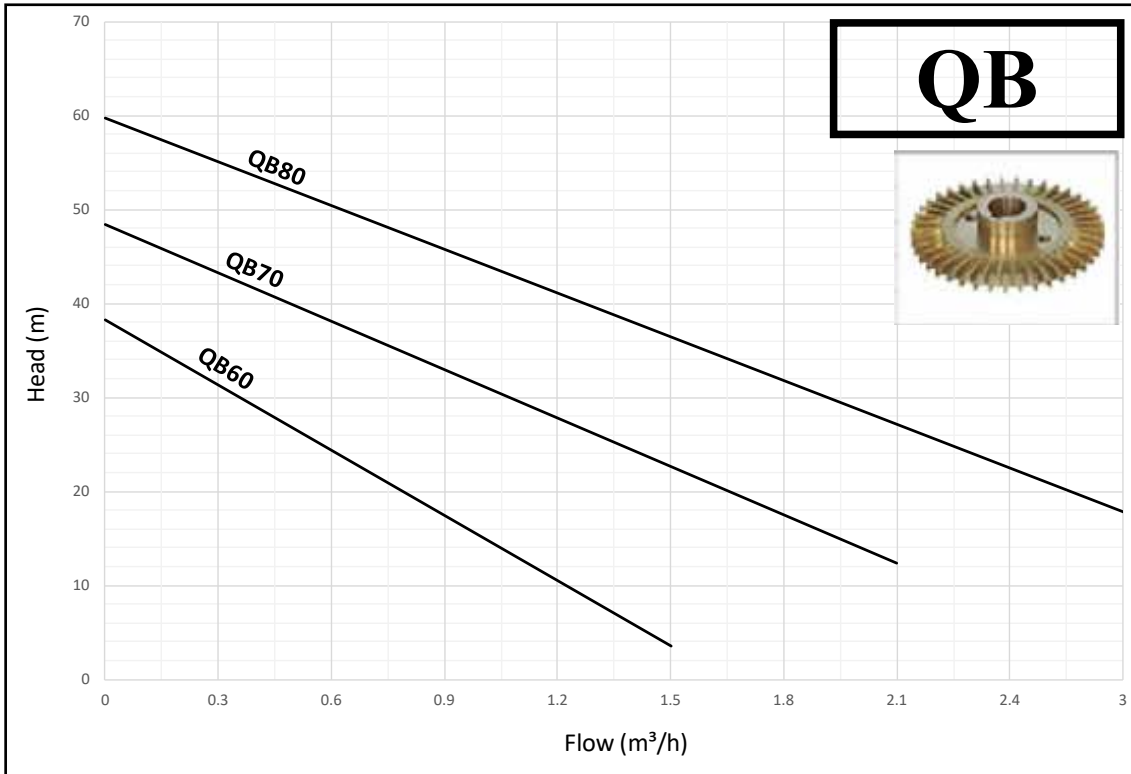


Diagram

No.	Description	No.	Description	No.	Description	No.	Description
1	O-Ring	7	Terminal board	13	End Cover	19	Coupling
2	Brass air vent screw	8	Capacitor	14	Fan	20	Fan Cover
3	Flat washer	9	Capacitor cover	15	Pump body	21	Cable protector
4	O-Ring	10	Cable Fixer	16	Impeller	22	Cable
5	Stator	11	Water proof ring	17	Shaft circlip	23	Rotor
6	Motor bracket	12	Bearing	18	Mechanical Seal	24	Wave spring

PERFORMANCE CURVE

Hydraulic Performance Curve



Technical Data

NO	MODE	POWER		Q (m³/h)	0	0.3	0.6	0.9	1.2	1.5	1.8	2.1	2.4	3	3.6	4.2
	Single-phase	kW	HP	Q (l/min)	0	5	10	15	20	25	30	35	40	50	60	70
1	QB60	0.37	0.5	H (m)	38	27.5	22	16	11	5.5						
2	QB70	0.55	0.75		48	45	41	35	29	23	17	10				
3	QB80	0.75	1		60	57	53	49	43	38	32.5	27	21	15		

Dimension

No	Model	Freq.	Suct. Max	Size	Start-up Amps	Running Amps	Dimension	N/W
	Single-phase	Hz	m	inch	A	A	L x W x H mm	kg
1	QB60	50	8	1" x 1"	6.2	1.9	280x140x170	5.5
2	QB70	50	8	1" x 1"	14	4.2	335x190x210	8.5
3	QB80	50	8	1" x 1"	16	5.2	340x190x210	9.0

